



EDEN MIDCALF
— SALES & LETTINGS —

£110,000
Westley Court
Kidderminster, DY10 3RT

PROPERTY SUMMARY

Set within approximately four acres of landscaped grounds and enjoying views over the Staffordshire and Worcestershire Canal and the surrounding countryside, Westley Court provides independent living for the over 50's in a selection of one and two bedroom apartments with the peace of mind that is afforded by a reception desk which is staffed for 24 hours a day, 365 days of the year. The development includes free car parking (with EV charging points) and car wash facilities. EPC = C

1



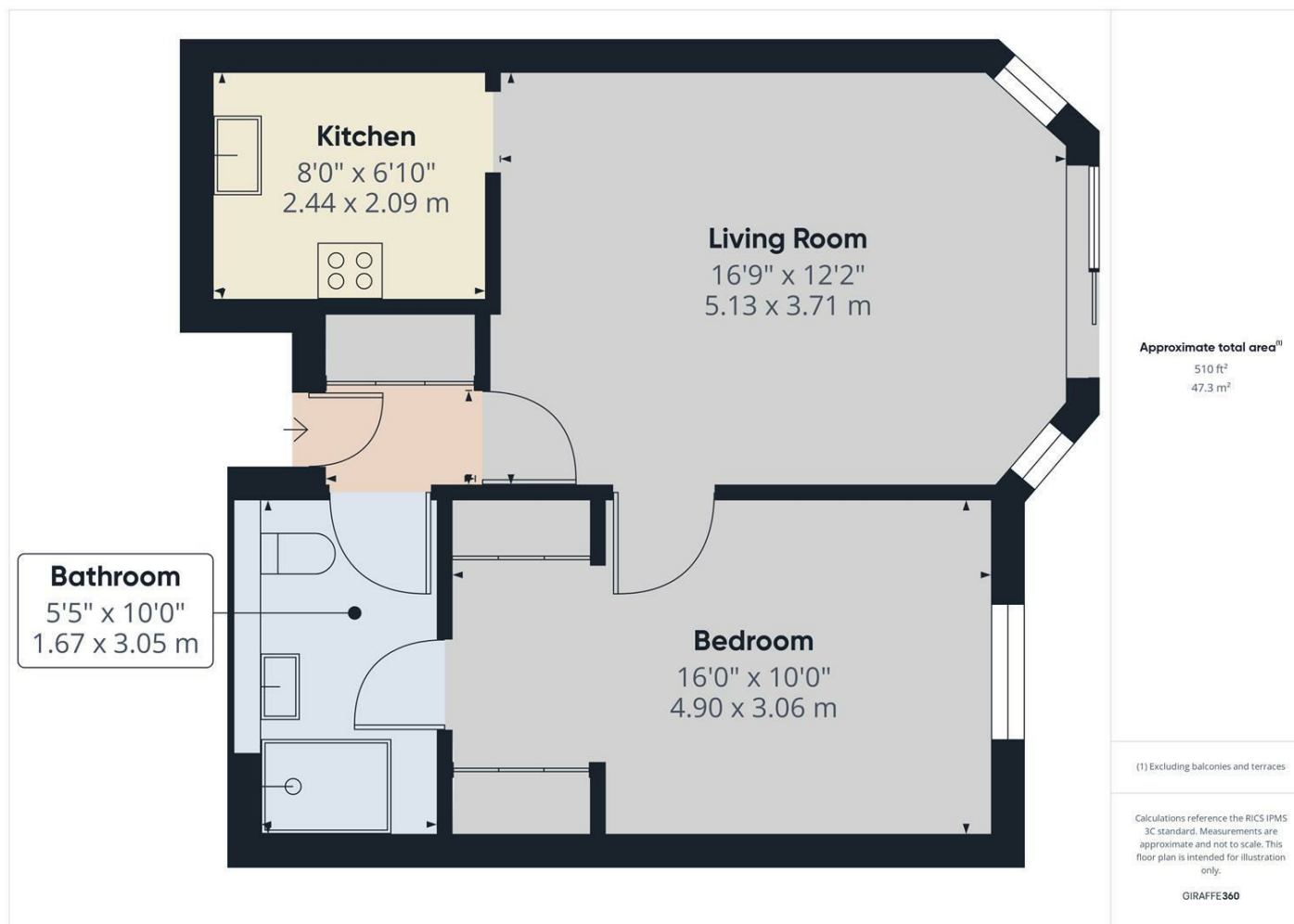
1



1







LOCAL AUTHORITY

TENURE

Leasehold

COUNCIL TAX BAND

D

VIEWINGS

By prior appointment only

Energy Efficiency Rating		
	Current	Potential
Very energy efficient - lower running costs		
(92 plus) A		
(81-91) B		
(69-80) C	73	78
(55-68) D		
(39-54) E		
(21-38) F		
(1-20) G		
Not energy efficient - higher running costs		
England & Wales	EU Directive 2002/91/EC	

Agents Note: Whilst every care has been taken to prepare these particulars, they are for guidance purposes only. All measurements are approximate and are for general guidance purposes only and whilst every care has been taken to ensure their accuracy, they should not be relied upon and potential buyers/tenants are advised to recheck the measurements.

EDEN MIDCALF
SALES & LETTINGS

28 High Street
Kinver
DY7 6HF

01384 878000

<https://www.edenmidcalf.co.uk/us/>